

EMILY Y. HORTON

355 South Jackson Street
Baldwin Hall Room 250
Athens GA, 30602 USA
emilyhorton@gmail.com
(706) 296 - 5053

EDUCATION

- Ph.D. Candidate, Anthropology & Integrative Conservation.** University of Georgia. Expected graduation: Spring 2020.
- *Trained in cultural and ecological anthropology. Specialization in human dimensions of environmental governance and conservation.*
- B.S. Environmental Science & Communications.** 2004. University of South Alabama. Mobile, Alabama.
- *Designed program tailored for work in Latin America that blended environmental sciences, communications, & Spanish.*
- Portuguese Language & Cultural Program.** Summer semester 2015. Florianópolis, Santa Catarina, Brazil.
- Spanish Language & Cultural Program.** Summer semester 2002. University of Veracruz, Xalapa, México.

PROFESSIONAL EXPERIENCE

- 2018 - 2019. Social Media Coordinator & Event Planner (Research Assistantship). ICON Program. University of Georgia.**
- 2017 - 2018. Graduate Teaching Assistant. Department of Anthropology & Franklin College. University of Georgia.**
- 2016 - 2017. Fulbright Scholar. U.S. Department of State. Marine Extractive Reserve Cururupu. NE Brazil (Maranhão).**
- *Conducted 13 months of research on socio-ecological dimensions of small-scale fisheries governance in marine reserve.*
- *Mixed methods drew from social sciences, natural sciences, and visual arts.*
- *Focus on sustainability, well-being, gender, and equity outcomes.*
- 2012 - 2015. Graduate Teaching Assistant. Department of Anthropology & Franklin College. University of Georgia.**
- *Assisted professors in teaching Introduction to Anthropology, Cultures of South Asia, Consumption and Globalization, and Integrative Conservation to undergraduate and graduate students.*
- *Responsibilities included grading, leading exam reviews, assisting with lectures, proctoring exams, and student guidance.*
- 2015. Federal Agency Intern. Chico Mendes Institute of Conservation & Biodiversity. Marine Reserve Pirajubaé. SC, Brazil.**
- *100 hour internship in marine reserve with federal agency (ICMBio) that oversees national protected area system.*
- *Co-authored conference paper with ICMBio mentor on gender, equity, and fisheries in reserve.*
- *Assisted staff in participatory research, Slow Food Brasil collaborations, and co-management meetings with local fishers.*
- 2010 - 2011. Grant Writer and International Relations Official. Conservation non-profit "Guyra" Paraguay. Paraguay.**
- *Obtained \$US 153,000 in funding writing 14 grants in collaboration with natural and social scientists, Indigenous leaders, protected area managers, and GIS specialists.*
- *Served as international liaison and English/Spanish translator.*
- 2009 - 2010. Environmental Scientist. Alabama Department of Environmental Management. Montgomery, AL.**
- *Developed educational and outreach materials for Alabama's first recycling grant program.*
- *Evaluated, awarded, and managed million-dollar grant program with small team. Doubled internal recycling program.*
- *Monitored and documented Deepwater Horizon oil spill via land and aerial photography in Gulf Shores, AL.*

2007 - 2009. Conservation Photographer for nonprofit Guyra. Focus on Pantanal & Atlantic Forest in Paraguay.

- Partnered with leading environmental nonprofit to publish first bilingual photography publications (English and Spanish) on Paraguay's portion of Pantanal wetland and Atlantic Forest (San Rafael Reserve).
- Internationally disseminated publications to garner public, policymaker, and donor support for conservation initiatives.

2008. Beekeeper/Product Research and Development Assistant. Greenbrier Honey Farm. Madison, Alabama.

- Assisted small-business (200 hives) with beekeeping activities, created business website, and developed new products.

2004 - 2007. Environmental Educator. U.S. Peace Corps in Latin America. Arroyo Claro, Itapúa, Paraguay.

- Collaborated with community, government, nonprofit, and educational institutions to address socioenvironmental needs.
- Wrote successful grants with schools to visit national protected areas and obtain first educational computers.
- Facilitated formation and strengthening of environmental groups and implemented community reforestation project.

AWARDS

- **2019.** Sea Grant Knauss Marine Policy Fellowship finalist. One year (2020-2021) fellowship with executive branch in D.C.
- **2019.** US-IALE Student Award. Presented at U.S. International Association for Landscape Ecology symposium. Fort Collins, CO.
- **2019.** UGA Graduate Travel Grant. Presented at Society for Applied Anthropology conference. Portland, OR. \$1,775 USD
- **2019.** UGA ICON/CICR Travel Grant. Presented at Society for Applied Anthropology conference. Portland, OR. \$300
- **2018.** U.S. Borlaug Summer Institute on Global Food Security, two week fellowship. Purdue University, Indiana.
- **2018.** UGA Graduate School Travel Grant. Presented on art-environment-science linkages in dissertation research at Dimensions of Political Ecology Conference. University of Kentucky, Lexington, KY. \$325 USD
- **2017.** Kickstarter (crowdfunded) award for carrying out community photography exhibit to disseminate research results in an inclusive and engaging manner. \$637 USD.
- **2015.** Fulbright U.S. Scholar Award for 2016 - 2017 dissertation research in Brazil. Bureau of Educational Affairs, U.S. Department of State. \$16,100 USD
- **2015.** Foreign Language and Area Studies Fellowship for Intensive Portuguese study in Florianópolis. UGA's Latin American & Caribbean Studies Institute and U.S. Department of Education. \$7,500 USD
- **2014.** Tinker Foundation-UGA Graduate Field Research Award for pre-dissertation research in Brazil. UGA's Latin American & Caribbean Studies Institute & Tinker Foundation, Inc. \$3,412.50 USD
- **2014.** Innovative & Interdisciplinary Research Grant for pre-dissertation work in Brazil. UGA Graduate School. \$575 USD
- **1999 - 2002.** Recipient of University of South Alabama's Freshman and Caldwell Scholarships.

PUBLICATIONS

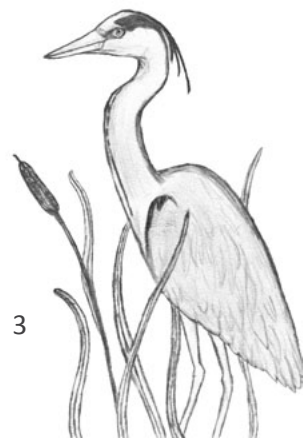
- Silva, J. S.; Azevedo, B.R.M.; Cutrim, A.S.T.; Silva, D.B.; Freitas, L.C.; Farias Junior, L. F.S.; Guimarães, R. F.; Ribeiro, T.C.G; Santana, T.C.; Campos, V.C.S.; **Horton, E. Y.**; Carvalho-Neta, R.N.F. (2016). As Questões Éticas Envolvidas em Pesquisas nas Comunidades Pesqueiras: O Uso do Termo de Consentimento Livre e Esclarecido. In *Metodologias e pesquisas em recursos aquáticos e pesca: uma guia prática*. Carvalho-Neta, R.N.F.; Almeida, Z.S.; Santos, D.M.S. (Org.). Pp. 221 - 230. São Luís: UEMA.
- Santin, L. and **Horton, E.Y.** (2015) *Extractivist Women in Marine Reserve Pirajubaé: Challenges and Possibilities in Valuing Feminine Knowledge and Skills in the Development of Artisanal Fishing Activities*. VII Brazilian Seminar on Protected Areas and Social Inclusion (PASI); II Latin America PASI Gathering. Florianópolis, Brazil.
- Carvalho-Neta, R. N. F.; Sousa, D. B. P.; Sobrinho, I. C.M.; **Horton, E. Y.**; Almeida, Z. S.; Tchaicka, L.; Sousa, A. L. (2015). Genotoxic & hematological parameters in *Colossoma macropomum* (Pisces, Serrasalminae) as biomarkers for environmental impact assessment in a protected area in northeastern Brazil. *Environmental Science & Pollution Research*, 1-10.
- Bormann, R.; Clause, A.; DePuy, W.; Ganguly J.; Guy, R.; Hallemeier, J.; **Horton, E.Y.**; Manus, S.; Padgett-Vasquez, S.; Unks, R. (2013). *Sea-Level Rise Adaptation and Planning: A Case Study from Tybee Island, Georgia*. Report for Carl Vinson Institute.
- Horton, E. (2010). *Gran Pantanal Paraguay*. Asunción. ISBN 978-99953-848-6-9
- Horton, E. (2008). *Salvemos San Rafael/Saving San Rafael*. Asunción. ISBN 978-99953-848-1-4

PRESENTATIONS (select)

- **April 10, 2019. US Regional Association of the International Association for Landscape Ecology (US-IALE).** *Art-science Collaboration for Ecology and Conservation (session)*. E. Horton. Fort Collins, CO.
- **March 20, 2019. Society for Applied Anthropology Annual Meeting.** *Fishing, Food, and Governance: Balancing for Equity and Sustainability (session)*. E. Horton. Portland, OR.
- **February 1, 2019. Symposium on Integrative Conservation.** *Small-scale Fisheries Governance and the Search for Well-being and Sustainability in a Brazilian Marine Protected Area*. E. Horton. UGA. Athens, GA.
- **September 24, 2018. Integrative Conservation Seminar.** (ICON 8001). *Small-scale Fisheries Governance Through Multiple Lenses: Well-being, Sustainability, and Justice in a Brazilian Marine Protected Area*. E. Horton. UGA. Athens, GA.
- **August 24, 2018. Integrative Conservation Orientation.** *Internship Experience & Outcomes*. E. Horton. UGA. Athens, GA.
- **April 20, 2018. Fulbright Information Session.** *Fulbright Experience: Tips for Applying*. E. Horton. UGA. Athens, Georgia
- **February 24, 2018. Dimensions of Political Ecology Conference.** Art-Science-Environment linkages in research. *Crossing Fields & Sparking Interest with Art:Science (session)*. E. Horton. University of Kentucky. Lexington, KY.
- **January 26, 2018. Symposium on Integrative Conservation.** *Small-scale Fisheries Governance and the Search for Well-being and Sustainability in a Brazilian Marine Protected Area*. E. Horton. UGA. Athens, GA.
- **March 20, 2017. Marine Extractive Reserve Cururpu Advisory Council Meeting.** *Preliminary anthropological research results*. E. Horton. Disseminated 2016 - 2017 fieldwork findings in advisory council meeting. Cururupu (MA), Brazil.
- **October 25, 2016. Marine Extractive Reserve Cururpu Advisory Council Meeting.** *Preliminary anthropological research results*. E. Horton. Updated advisory council on 2016 - 2017 fieldwork status and outcomes. Lençois (MA), Brazil.
- **January 29, 2016. Symposium on Integrative Conservation.** *Small-scale Fisheries Governance and the Search for Wellbeing and Sustainability in a Brazilian Marine Extractive Reserve*. E. Horton. UGA. Athens, GA.
- **September, 2015. Marine Extractive Reserve Cururpu Advisory Council Meeting.** *Preliminary anthropological research results*. E. Horton. Presented 2014 pre-dissertation research to council prior to fieldwork. Cururupu (MA), Brazil.
- **August 22, 2015. Integrative Conservation Orientation.** *Grant Writing: Experience and Tips*. E. Horton. UGA. Athens, GA.
- **March 26, 2015. Society for Applied Anthropology Annual Meeting.** *Socioecological Dimensions of Small-scale Fisheries Governance in a Brazilian Marine Extractive Reserve*. E. Horton. Pittsburgh, Pennsylvania.
- **February, 2015. Symposium on Integrative Conservation.** *Socioecological Dimensions of Small-scale Fisheries Governance in a Brazilian Marine Extractive Reserve*. E. Horton. UGA. Athens, GA.
- **October 8, 2014. Sustainability Guest Lecture.** *Socioecological Dimensions of Sustainable Fisheries Governance in a Brazilian Marine Extractive Reserve*. E. Horton. Hispanic Heritage Month. University of South Carolina. Columbia, SC.
- **February 6, 2014. Symposium on Integrative Conservation.** *Socioecological Dimensions of Sustainable Fisheries Governance in a Brazilian Marine Extractive Reserve*. E. Horton. UGA. Athens, GA.
- **April 10, 2013. Georgia Water Resources Conference.** Integrative Conservation student representative on panel discussing impacts of sea-level rise on Tybee Island, Georgia. E. Horton. UGA. Athens, GA.

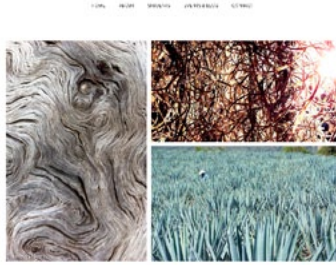
SERVICE (select)

- 2018. Co-Facilitator, Arts & Environment workshop.** Integrative Conservation Conference. UGA, Athens, GA.
- 2017 - 2018. Website Coordinator.** Collaborated with colleagues to develop first website and logo for Integrative Conservation graduate student organization. University of Georgia (UGA).
- 2018. Event Music Organizer.** Symposium on Integrative Conservation (ICON). UGA, Athens, GA.
- 2017. U.S. Student Fulbright Campus Committee Member.** UGA, Athens, GA.
- 2017. Undergraduate Mentor.** Anthropology Graduate Student Organization, UGA.
- 2016. Event Coordinator.** *BRCAN't Stop Me: Prevention & Early Detection of Hereditary Cancers*, UGA.
- 2014 - 2015. Logo Designer.** UGA ICON Ph.D. Program & Southern Anthropological Society conference.
- 2014. Audiovisual Committee Chair.** Symposium on Integrative Conservation. UGA, Athens, GA.
- 2013 - 2014. Treasurer.** Anthropology Graduate Student Association.
- 2012 - 2014. Board Member.** Non-profit Coosa Riverkeeper (river conservation focus)



WEBSITE DEVELOPMENT

Integrative Conservation Graduate Student Organization



<https://oincuga.weebly.com>

Greenbrier Honey Farm



<https://greenbrierhoneyfarm.weebly.com/>

PHOTOGRAPHY

viewable online: <https://emillyhortonphotography.zenfolio.com/>

EXHIBITS (select)

2017. Organized Kickstarter funded community photography exhibit in (marine) Extractive Reserve Cururupu to disseminate preliminary research results to host communities in an inclusive and engaging format.

2011. *Celebrating the Biodiversity of Paraguay, International Traveling Photography Exhibit (Paraguay & US).* Collaboration between Guyra Paraguay, Moises Bertoni Foundation, the Embassy of Paraguay and the Paraguay-Kansas Committee.

2008. *San Rafael, More Than a Reserve, a Compromise.* Organizers: Citibank, Guyra Paraguay, Peace Corps Paraguay, the Paraguayan Secretariat of Tourism & Environment, and the United Nations. Asunción, Paraguay.

PUBLICATIONS WITH WORK FEATURED (select)

National Audubon Society

- 2015. *International Birding and Ecotourism.* Online article.
- 2009. *International Alliances Program Field Report.* Washington, DC.



Biomes and Ecosystems (Encyclopedia). 2013. Editor: Robert Warren Howarth, Cornell University. Assistant Editor: Jacqueline Mohan, University of Georgia.

United Nations Development Programme (UNDP). 2009. *Pueblos Indígenas. Tres historias. Un compromiso.* Asunción, PY.

International Union for Conservation of Nature (IUCN), National Committee of the Netherlands. 2009. Magazine distributed to IUCN members, NGO's, and policymakers in the Netherlands.

Paraguayan Ministry of Tourism. 2009. Birdwatching brochure for national and international dissemination. Asunción, PY

GRAPHIC DESIGN (samples)

Logo for Integrative Conservation Ph.D. Program, UGA



ICON logo used for fundraising & promotion



Postcards for Paraguayan biodiversity photo exhibit.

MUSICAL COLLABORATIONS

2018. Live performance to raise funds for Broad River Watershed Association (non-profit). 40 Watt Club. Athens, GA.

2015. Original music used in socioenvironmental documentary, *Fishermen's Right to Know*, by Natasha Raheja.

2011. Worked with non-profit Coosa Riverkeeper to create soundtracks for public outreach videos.

INDIGENOUS CULTURAL EXCHANGES

2011, Ache ethnicity. Upper Parana Atlantic Forest Ecoregion, Paraguay. Visited Kuetuvy community to learn about organic, shade-grown yerba mate being cultivated for export in community's reserve.

2010, Ayoreo ethnicity. Dry Chaco Ecoregion, Paraguay. Conducted interview with Ayoreo activist on Indigenous and Occidental perspectives on protected areas and threats facing Ayoreo groups living in voluntary isolation.

2010, Guarani Ñandeva ethnicity. Dry Chaco Ecoregion, Paraguay. Interviewed leaders on community context, especially in relation to land use & natural resources. Visually documented harvesting of traditional cultural foods (bromeliad & tuber).

2008, Yshir ethnicity. Pantanal Ecoregion, Paraguay. Visually documented traditional ceremonies and conducted interviews with shamans and leaders regarding preservation of cultural practices linked to land and natural resources. Distributed DVDs to leaders containing film footage, which was used by communities to highlight land struggles in the media.

2007, Mbya Guarani ethnicity. Upper Parana Atlantic Forest Ecoregion, Paraguay. Conducted interviews with leaders from communities located in or surrounding federally protected area regarding relationship with reserve and natural resources.

INSTITUTIONAL DIVERSITY & INCLUSION

2019. *Gender and Fieldwork Symposium. Communications Coordinator.* Collaborated with anthropology colleagues for cross-disciplinary symposium aimed at sparking dialogue and providing resources on gender & sexuality in fieldwork. UGA, Athens, GA.

2018. Safe Space Certification. University of Georgia's LGBT Resource Center. Coordinated and participated in training on gender and sexual identity, homophobia, heterosexism, and how university affiliates can support and be allies for the LGBTQ community.

LANGUAGES

English (native)

Portuguese (advanced)

Spanish (advanced)

Guarani - Indigenous language of Paraguay (beginner)

FUTURE LANGUAGE GOALS:

Japanese (beginner)

French (beginner)